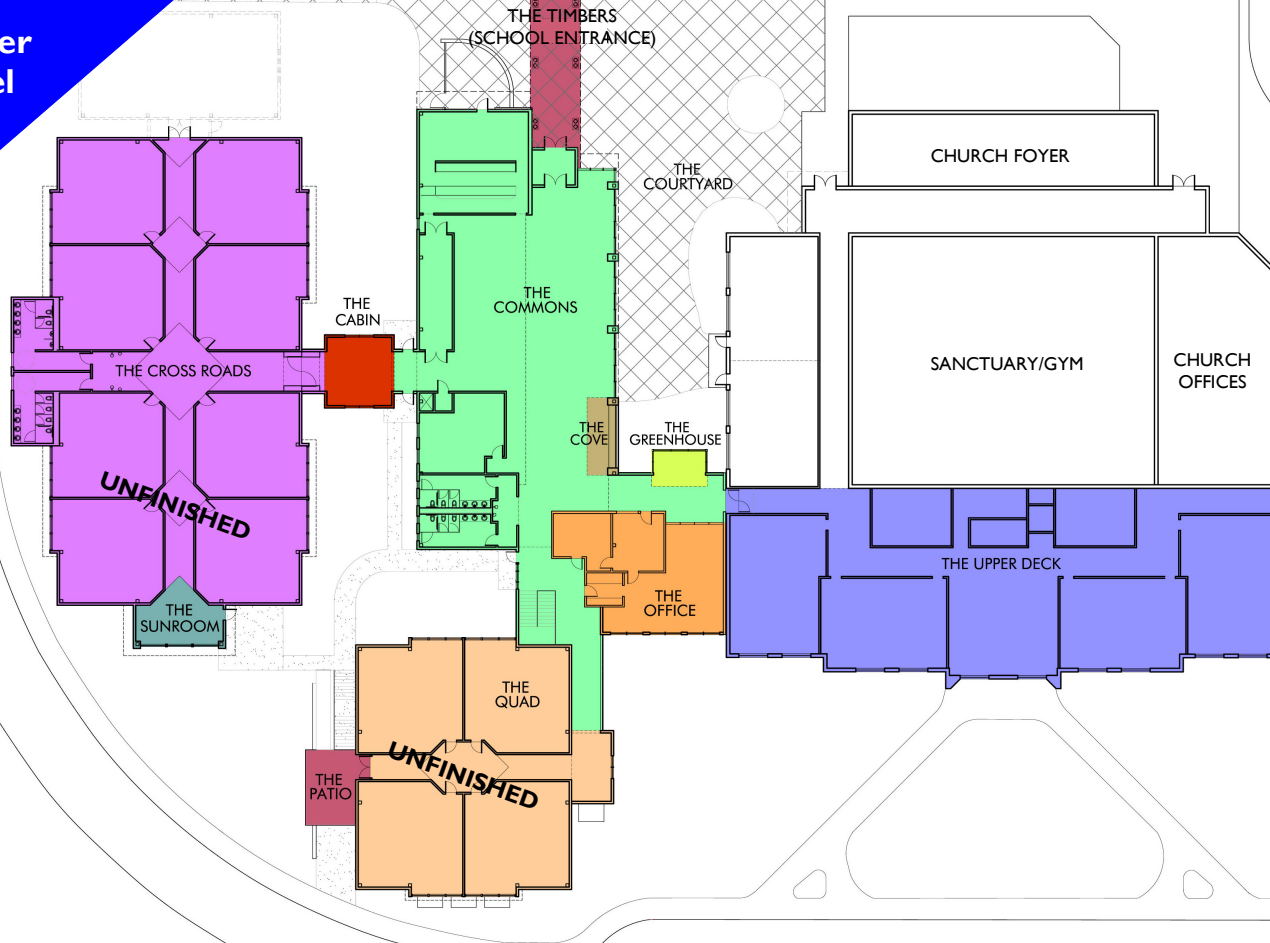


Messiah's New Buildings

Upper Level



THE FOLLOWING AREAS WILL BE UNFINISHED and will need to be finished by members of Messiah.

4 OF THE CLASSROOMS AT THE CROSSROADS: Four of the eight classrooms will not be finished. These are the first four that will need to be finished by members of the congregation.

THE QUAD: This is the area located on the upper level of the two story back building. The four classrooms and patio area will be the future Jr. High wing. The rooms will be used for the day school, Sunday school, Bible classes, and other ministries.

THE PAVILION: The new soccer field has been graded and replanted with a new sprinkler system. A pavilion is planned to be constructed next to the soccer field. It could be used for many ministries; youth, confirmation, day school, soccer, and even a community picnic spot.

PLAYGROUND: A new playground is planned next to the soccer field. It will be fenced in and will feature traditional playground equipment; swings, monkey bars, tether ball, and other equipment.

THE COMMONS: Includes a new kitchen, cafeteria, a coffee and drink service area, school offices, bathrooms, table and chair storage room, and teacher lounge/child care room. This area will serve a large variety of ministry needs; Sunday morning fellowship and Bible Class, weekday school lunch, weekday Bible classes and fellowship ministries, day and evening ministry events, banquets and dinners.

THE COVE: A new "coffee bar" area to serve drinks. Located in the Commons.

THE GREENHOUSE: The waiting area outside the school offices. Also suitable for casual fellowship or small meetings.

THE CABIN: This very creative space is designed to look like an old school house. It is the walkway into the 8 classroom "Crossroads" building and will have movable bench seating for use by small groups in a variety of ministries including Sunday school, day school, confirmation, youth ministry, and others.

THE CROSS ROADS: This building will have bathrooms, and four of the eight classrooms will be finished initially. It is distinguished by the unique diamond floor patterns. The rooms will be used for the day school, but also for Sunday school, Bible Classes, and meetings. The rooms feature a unique design with high open ceilings, angled door entries, bump out windows, and movable furniture.

THE OFFICE: The school offices include a receptionist desk, conference room for meetings and small groups, workroom, principal's office, and additional administrative office space.

THE UPPER DECK: This is not a part of the new construction – but a name given to the five classrooms on the top floor of the existing education building. This area will continue to be used for the day school, Sunday school, and other ministries.

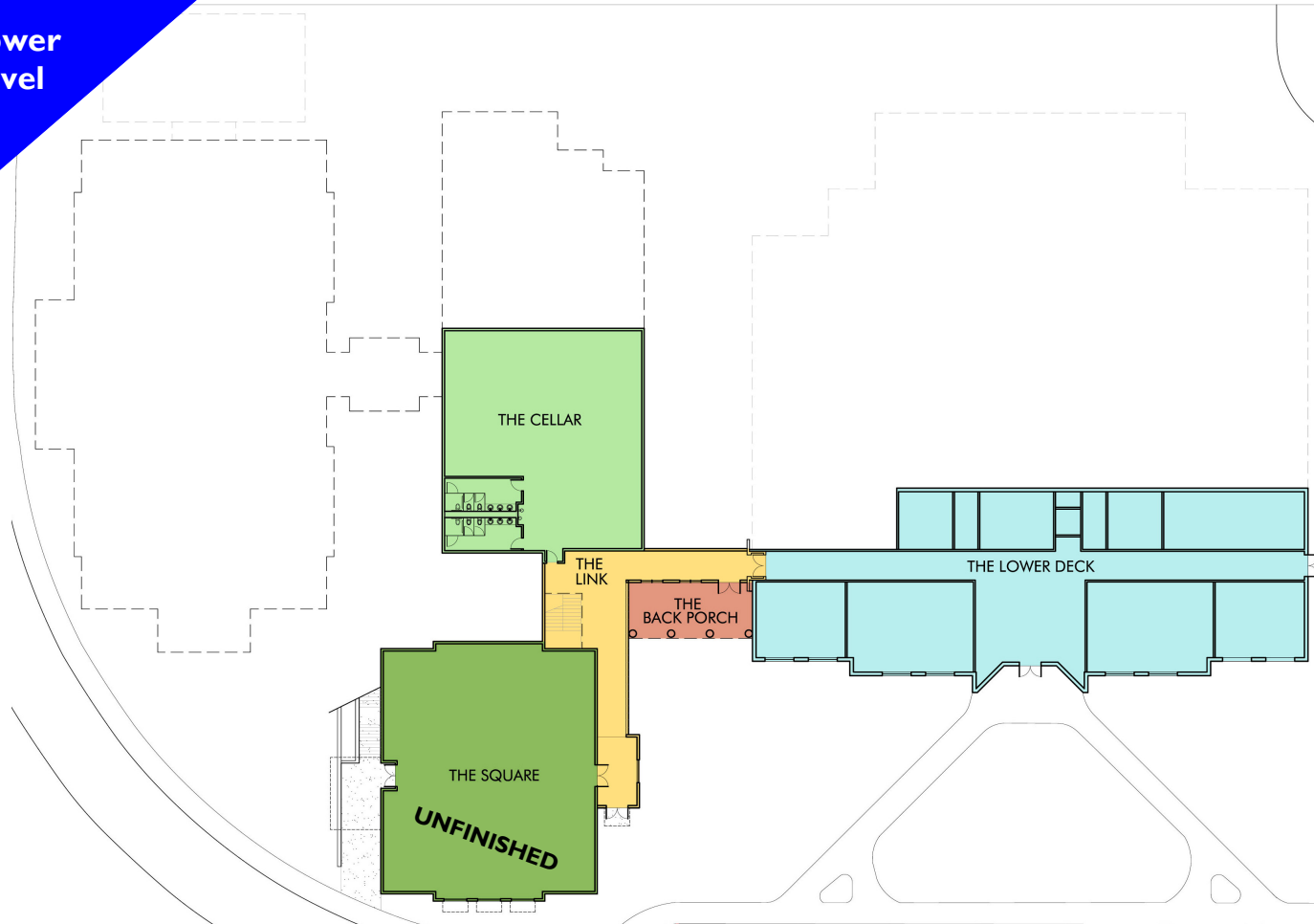
THE COURTYARD – The Commons area will have three sets of double doors leading out to the Courtyard that will create outdoor space for fellowship and eating.

SANCTUARY AREA REMODELING: The current kitchen equipment will be moved to the new kitchen area in The Commons. The existing kitchen will then be remodeled to be the Connections Center / Electronic Resource Center / Bookstore / kitchenette. The business office currently located next to the cry room will be changed into an eyeglass processing room for missions. The architects are still studying the feasibility of opening up the side walls in the sanctuary to create additional seating for worship. This would open up the preschool wing to be a part of the main sanctuary – creating additional seats for worship.

Lower level is displayed on reverse side →

Messiah's New Buildings

Lower
Level



THE CELLAR: The basement area underneath the Commons will be partially finished for storage space. Eventually it will include bathrooms, an eyeglass processing room for missions, and a Sr. High Youth room.

THE LINK: The hallway and stairwell connecting the first level with the second level rooms.

THE BACK PORCH: This covered outdoor space is immediately next to the Early Childhood center and will serve as a great area to relax outside – especially on a rainy or hot and sunny day. The Preschool playground will be moved to the area next to this porch.

THE LOWER DECK: This is not a part of the new construction, but a name given to the four classrooms on the lower level of the existing education building. This will be the new home of the Early Childhood Ministry. Drop off and pick up for Preschool and Kindergarten will be around back on the circle drive.

THE SQUARE: – The **unfinished** area underneath the Quad will be known as The Square. It will be a 4,000 square foot multi-purpose room that, when it is finished, will have many uses; including religion classes for the day school, Jr. and Sr. High Youth ministries, confirmation ministry, Bible Classes, Sunday School. This space could be used to host an additional worship service on Sunday mornings – either at 9:30, 11:00 or both.